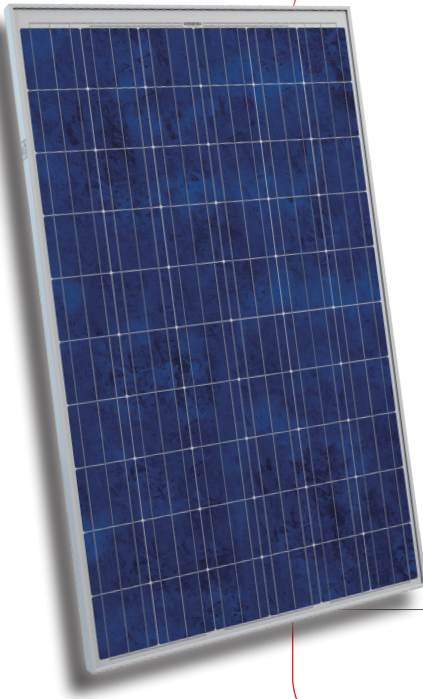


STP230 - 20/Wd STP225 - 20/Wd



230 Watt POLYCRYSTALLINE SOLAR MODULE



Features



High module conversion efficiency

14.1%

Up to 14.1%, through superior cell technology and leading manufacturing capability



Self-cleaning & anti-reflective

Self-clean

Anti-reflective, hydrophobic layer improves light absorption and reduces surface dust



Positive tolerance

0/+5%

Guaranteed positive tolerance 0/+5% ensures power output reliability



Excellent weak light performance

Weak light

Excellent performance under low light environments mornings, evenings, and cloudy days



Extended wind and snow load tests

3800Pa
5400Pa

Entire module certified to withstand extreme wind (3800 Pascal) and snow loads (5400 Pascal) *



Suntech current sorting process

2%

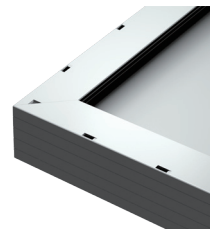
All Suntech modules sorted and packaged by amperage, maximizing system output by reducing mismatch losses by up to 2%

Certifications and standards:
UL1703, IEC 61215, IEC 61730, conformity to CE



Trust Suntech to Deliver Reliable Performance Over Time

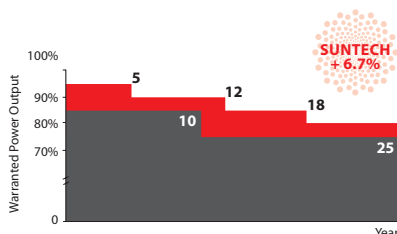
- World's No.1 manufacturer of crystalline silicon photovoltaic modules
- Unrivalled manufacturing capacity and world-class technology
- Rigorous quality control meeting the highest international standards: ISO 9001: 2008, ISO 14001: 2004 and ISO17025: 2005
- Tested for harsh environment (salt mist and ammonia corrosion testing: IEC 61701, IEC 62716)***



New, improved frame design

Suntech's new rigid and reliable hollow chamber frame provides four additional grounding options for increased design flexibility and easier installation. Anti-counterfeit mark lets you know you're receiving genuine Suntech products.

Industry-leading Warranty based on Pnom



- Based on nominal power (Pnom)
- 25-year transferrable power output warranty: 5 years/95%, 12 years/90%, 18 years/85%, 25 years/80% ****
- Warrants 6.7% more power than the market standard over 25 years
- 10-year material and workmanship warranty



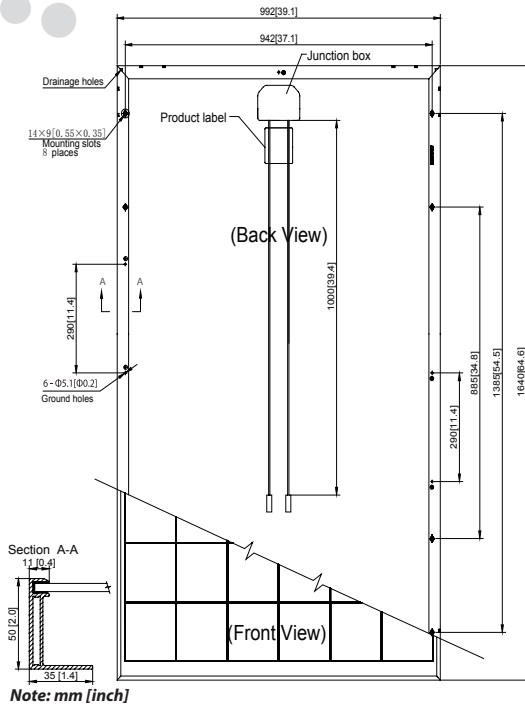
Most Modern IP67 Rated Junction Box

Supports any orientation installation. High performance low resistance MC4 connectors ensure maximum module power output for highest energy production.

* Please refer to Suntech Standard Module Installation Manual for details. **PV Cycle only for EU market.

*** Please refer to Suntech Product Near-coast Installation Manual for details. **** Please refer to Suntech Product Warranty for details.

STP230-20/Wd STP225-20/Wd



Electrical Characteristics

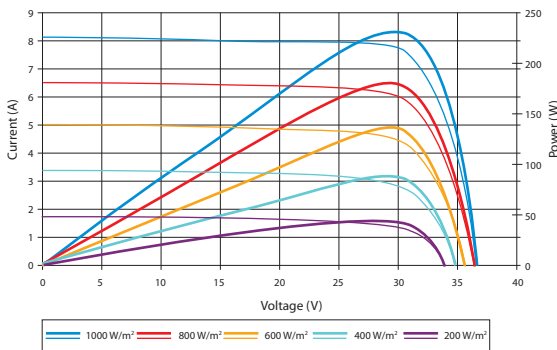
STC	STP230-20/Wd	STP225-20/Wd
Optimum Operating Voltage (Vmp)	29.8 V	29.6 V
Optimum Operating Current (Imp)	7.72 A	7.61 A
Open Circuit Voltage (Voc)	36.8 V	36.7 V
Short Circuit Current (Isc)	8.25 A	8.15 A
Maximum Power at STC (Pmax)	230 W	225 W
Module Efficiency	14.1%	13.8%
Operating Module Temperature	-40 °C to +85 °C	
Maximum System Voltage	1000 V DC (IEC) / 600 V DC (UL)	
Maximum Series Fuse Rating	20 A	
Power Tolerance	0/+5 %	

STC: Irradiance 1000 W/m², module temperature 25 °C, AM=1.5;
Best in Class AAA solar simulator (IEC 60904-9) used, power measurement uncertainty is within +/- 3%

NOCT	STP230-20/Wd	STP225-20/Wd
Maximum Power at NOCT (Pmax)	168 W	165 W
Optimum Operating Voltage (Vmp)	27.1 V	26.9 V
Optimum Operating Current (Imp)	6.20 A	6.12 A
Open Circuit Voltage (Voc)	33.9 V	33.8 V
Short Circuit Current (Isc)	6.68 A	6.65 A

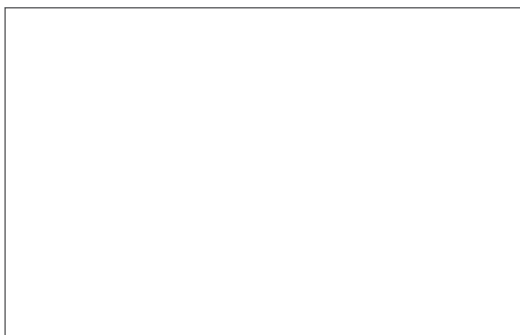
NOCT: Irradiance 800 W/m², ambient temperature 20 °C, AM=1.5, wind speed 1 m/s;
Best in Class AAA solar simulator (IEC 60904-9) used, power measurement uncertainty is within +/- 3%

Current-Voltage & Power-Voltage Curve (230-20)



Excellent performance under weak light conditions: at an irradiation intensity of 200 W/m² (AM 1.5, 25 °C), 95.5% or higher of the STC efficiency (1000 W/m²) is achieved

Dealer information



Specifications are subject to change without further notification

Temperature Characteristics

Nominal Operating Cell Temperature (NOCT)	45±2°C
Temperature Coefficient of Pmax	-0.44 %/°C
Temperature Coefficient of Voc	-0.33 %/°C
Temperature Coefficient of Isc	0.055 %/°C

Mechanical Characteristics

Solar Cell	Polycrystalline silicon 156 × 156 mm (6 inches)
No. of Cells	60 (6 × 10)
Dimensions	1640 × 992 × 50mm (64.6 × 39.1 × 2.0 inches)
Weight	19.1 kgs (42.1 lbs.)
Front Glass	3.2 mm (0.13 inches) tempered glass
Frame	Anodized aluminium alloy
Junction Box	IP67 rated (3 bypass diodes)
Output Cables	TUV (2Pfg1169:2007), UL 4703, UL 44 4.0 mm ² (0.006 inches ²), symmetrical lengths (-) 1000mm (39.4 inches) and (+) 1000 mm (39.4 inches)
Connectors	MC4 connectors

Packing Configuration

Container	20' GP	40' HP
Pieces per pallet	21	21
Pallets per container	6	28
Pieces per container	126	588